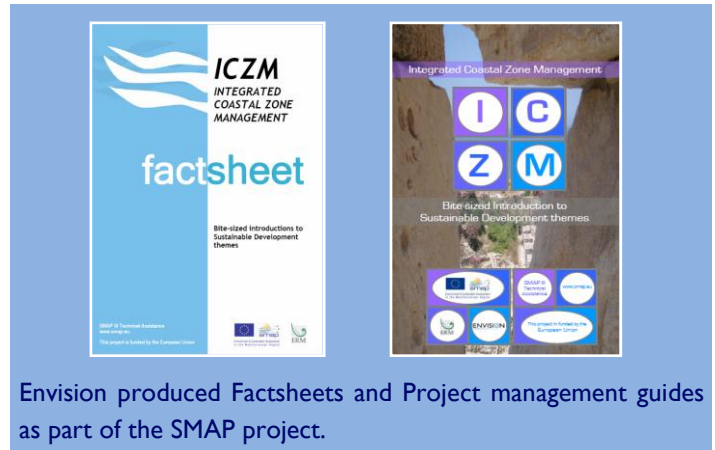




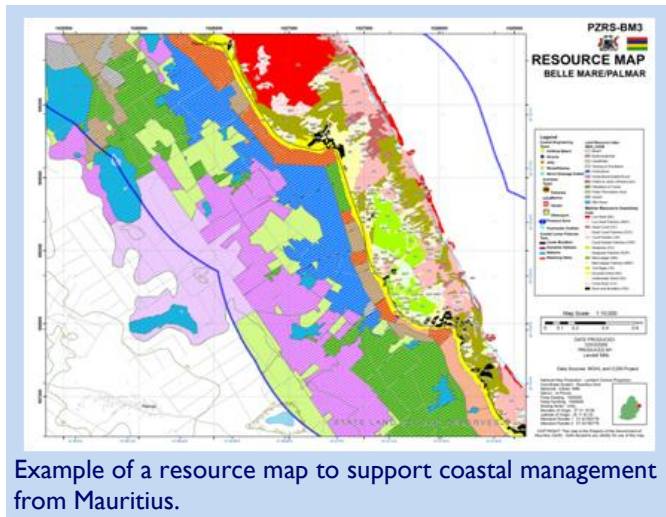
COASTAL MANAGEMENT

Integrated coastal management in the Mediterranean: As part of the SMAP project (Short and Medium-term priority environmental Action Programme) Envision was part of the technical assistance expert group dealing with the environmental component of the Euro-Mediterranean Partnership that aims to integrate environmental concerns into relevant aspects of economic policy and mitigating any potential negative environmental consequences. **Envision:**

- Provided coastal management expertise and strategic advice to projects in Morocco, Algeria, Tunisia, Egypt, Israel, Palestine, Jordan, Lebanon, Syria and Turkey.
- Coordinated and produced programme outputs including factsheets, an ICZM guidebook and project management guides.



Envision produced Factsheets and Project management guides as part of the SMAP project.



Example of a resource map to support coastal management from Mauritius.

Coastal Management in Mauritius: The Mauritian government proposed a new national park, made up of islands with both high conservation status and potential for tourist development, and also initiated development of a national coastal management strategy. **Envision:**

- Surveyed islands for the National Park and developed management recommendations.
- Developed a management strategy for the mainland for sustainable economic development.
- Drafted management plans for high pressure areas to secure coastal uses and livelihoods.

Reviewing coastal management in Europe: Envision was part of a group that reviewed compliance with the EU Recommendation concerning the implementation of Integrated Coastal Zone Management in individual European Member States. **Envision:**

- Reviewed country strategies and progress for France, Ireland and Belgium.

Coastal Habitat Mapping in St Lucia: The Government of St Lucia commissioned a coastal habitat mapping study to support coastal management. **Envision:**

- Provided ground-truthing of habitat types.
- Identified marine health indicators.
- Designed and delivered training in mapping, health indicators and coastal management.



Envision staff being interviewed for St Lucian television as part of a public awareness campaign for the coastal habitat project.